

YZH-PF490(A) HPF-490(A) KRT470-R

7.92mm



For: **PFAFF** (百福) 471-493
SEIKO (精工) PWB-8GW
(short gib)
GOLDEN WHEEL (金轮) CS-8820.8810
HIGHLEAD (海菱) GC24618.24618-1

YZH-810-10(A) HSH-10-100(A) KRT110

7.93mm



For: **SINGER** (胜家) 21W162. 110K.
110W124. 128
(short gib)

YZH-PF490(5)TR HPF-490(5)TR KRT470C-S

7.92mm



For: **UNICORN** (神马) LT5-HP331AT.
LT5-HP333AT.
SEIKO (精工) PWB-22GWC.
8GWC-FL.LC
JUKI (重机) PLW-1245,-4,-6,-1246-4,-6

YZH-PF335 HPF-335

7.24mm



For: **PFAFF** (百福) 138. 234. 331. 333. 335.
337-734

YZH-390G HPF-390 KRT390G

7.925mm



For: **PFAFF** (百福) 390
GOLDEN WHEEL (金轮) CS-8365,
8900,8901,8902

YZH-PF335(5) HPF-335(5) KR69-V

7.24mm



For: **SEIKO** (精工) LSC-8B. 8BV
CONSEW (康秀) 277R. 277RFS
TYPICAL WANPING (莞坪标准)
TW3-335,335V

YZH-341G HYM-341 KRT341-G

7.93mm



For: **JUKI** (重机) LS-321
GOLDEN WHEEL (金轮) CS-8233
MILLION SPECIAL (万特) MS-1341
NITAKA (日高)
TC-341,360-5,6,7,8,9,10,12,13,14,15,360L
TC-8370,8371,8372,8872,9510,9511,9520
TAKING (天王星) TK-341,341N

YZH-PF480 HPF-480 KHS480

7.24mm



For: **PFAFF** (百福) 461-469.
461-900-469-900.
481-489. 481-900-489-900

YZH-341NR HYM-341 KRT341-NR

7.925mm



For: **GOLDEN WHEEL** (金轮) CS-8233-NR
JUKI (重机) LS 341N
TYPICAL WANPING (莞坪标准)
TW3-341

YZH-PF134 HPF-134 KR134

7.24mm



For: **PFAFF** (百福) 133. 134

YZH-810-10 HSH-10-100 KRT136-M

7.93mm



For: **SINGER** (胜家) 21W162. 110K. 110W124. 128
MITSUBISHI (三菱) PB-810. 810-10. 820. 820-10.
840. 840-10. PN-840
840-10FP. LS5-5110. 5120

YZH-PF151 HPF-151

7.92mm



For: **PFAFF** (百福) 120. 122. 141-146.
142-720. 142-721.151. 155. 175-196.
191-196. 194-720.871-893

YZH-810-10 HSH-10-100 KRT136-M

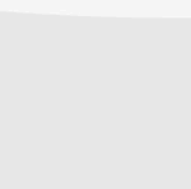
7.93mm



For: **SINGER** (胜家) 21W162. 110K. 110W124. 128
MITSUBISHI (三菱) PB-810. 810-10. 820. 820-10.
840. 840-10. PN-840
840-10FP. LS5-5110. 5120

YZH-PF151 HPF-151

7.92mm



For: **PFAFF** (百福) 120. 122. 141-146.
142-720. 142-721.151. 155. 175-196.
191-196. 194-720.871-893

YZH-DU271 HDU-271

7.24mm



For: **DURKOPP** (杜克普) 271

YZH-842 HG12-15L KRT842H-S

9.52mm



For: **BROTHER** (兄弟) LT2-B842-3, B841-3
JACK (杰克) JK5842-3
PROTEX (通宇) TY-B842-3
ZOJE (中捷) ZJ842
SIRUBA (高林) T828-4-ML,T828-47-ML
TYPICAL (标准) GC6842M

YZH-236 HSH-36-2 KRT236

7.93mm



For: **SINGER** (胜家) 236G120. 124. 125
130-132. 236W

YZH-842H HG12-15L(H) KRT842H-R

9.52mm



For: **BROTHER** (兄弟) LT2-B841-5.B842-5
(heavy materials)(厚料)
PROTEX (通宇) TY-B842-5
TYPICAL (标准) GC6842H
ZOJE (中捷) 842-5

YZH-8-20 HSH-8-20 KRP108-R

6.35mm



For: **SINGER** (胜家) 108U20. 108U30
DURKOPP (杜克普) 460

YZH-845 HG12-15LC KRT845BK

9.52mm



For: **BROTHER** (兄弟) LT2-B845-3
JUKI (重机) LH-3168
JACK (杰克) JK5845-3
TYPICAL (标准) GC6845H
ZOJE (中捷) 845
SIRUBA (高林) T828-45-H,-M,T828-48-L

长轴小型旋梭系列
LONG AXIS OF THE SMALL HOOK SERIES

YZH-831 HSH-12-15L KRT12-5B

9.52mm



For: **BROTHER** (兄弟) LT2-831-1.3B832-1.3B833
SEIKO (精工) LTW-26.27.27B.27BM
NITAKA (日高) TC2-B842
SUNSTAR (日星) KM2-740B
SICAMA (安机) LT2-B842

YZH-845H

For: **BROTHER** (兄弟) LT2-B845-5,-7,-B848-1
TL-848A,TN-845A
JACK (杰克) JK845-5

YZH-831H HSH-12-15L(H) KRT12-5BHR

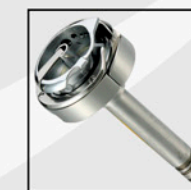
9.52mm



For: **BROTHER** (兄弟) LT2-B831-5.B832-5
(heavy materials)(厚料)
GOLDEN WHEEL (金轮) CS-3100-3,
CS-8J2-3,-5,-871

YZH-265 HSH-12-15M KRT12-5M

9.52mm



For: **MITSUBISHI** (三菱) DN-260.260-10
DN-265.265-10
LT2-220-M.2220M.220.2220.L
UNICORN (神马) LT2-H320.H321
TYPICAL (标准) GC6220M
HIGHLEAD (海菱) GC20518-M

YZH-835 HSH-12-15LC KRT12-5BK

9.52mm



For: **BROTHER** (兄弟) LT2-B835-3.5.800
SEIKO (精工) LTW-27BK
CONSEW (康秀) 327R-1
(corner sewing machine)
GOLDEN WHEEL (金轮) CS-315,
CS-3150-5 CS-875-3

YZH-275 HSH-12C KRT12-5MK

9.52mm



For: **MITSUBISHI** (三菱) DN-275-10.10K
UNICORN (神马) LT2-H240-MOB
(corner sewing machine)
TYPICAL (标准) GC6240M
HIGHLEAD (海菱) GC20528-M

YZH-PF490(A) HPF-490(A) KRT470-R

7.92mm



For: **PFAFF** (百福) 471-493
SEIKO (精工) PWB-8GW
(short gib)
GOLDEN WHEEL (金轮) CS-8820.8810
HIGHLEAD (海菱) GC24618.24618-1

YZH-810-10(A) HSH-10-100(A) KRT110

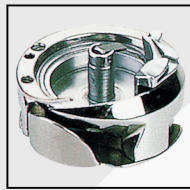
7.93mm



For: **SINGER** (胜家) 21W162. 110K.
110W124. 128
(short gib)

YZH-PF490(5)TR HPF-490(5)TR KRT470C-S

7.92mm



For: **UNICORN** (神马) LT5-HP331AT.
LT5-HP333AT.
SEIKO (精工) PWB-22GWC.
8GWC-FL.LC
JUKI (重机) PLW-1245,-4,-6,-1246-4,-6

YZH-PF335 HPF-335

7.24mm



For: **PFAFF** (百福) 138. 234. 331. 333. 335.
337-734

YZH-390G HPF-390 KRT390G

7.925mm



For: **PFAFF** (百福) 390
GOLDEN WHEEL (金轮) CS-8365,
8900,8901,8902

YZH-PF335(5) HPF-335(5) KR69-V

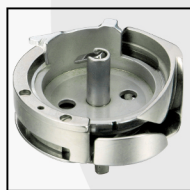
7.24mm



For: **SEIKO** (精工) LSC-8B. 8BV
CONSEW (康秀) 277R. 277RFS
TYPICAL WANPING (莞坪标准)
TW3-335,335V

YZH-341G HYM-341 KRT341-G

7.93mm



For: **JUKI** (重机) LS-321
GOLDEN WHEEL (金轮) CS-8233
MILLION SPECIAL (万特) MS-1341
NITAKA (日高)
TC-341,360-5,6,7,8,9,10,12,13,14,15,360L
TC-8370,8371,8372,8872,9510,9511,9520
TAKING (天王星) TK-341,341N

YZH-PF480 HPF-480 KHS480

7.24mm



For: **PFAFF** (百福) 461-469.
461-900-469-900.
481-489. 481-900-489-900

YZH-341NR HYM-341 KRT341-NR

7.925mm



For: **GOLDEN WHEEL** (金轮) CS-8233-NR
JUKI (重机) LS 341N
TYPICAL WANPING (莞坪标准)
TW3-341

YZH-PF134 HPF-134 KR134

7.24mm



For: **PFAFF** (百福) 133. 134

YZH-810-10 HSH-10-100 KRT136-M

7.93mm



For: **SINGER** (胜家) 21W162. 110K. 110W124. 128
MITSUBISHI (三菱) PB-810. 810-10. 820. 820-10.
840. 840-10. PN-840
840-10FP. LS5-5110. 5120

YZH-PF151 HPF-151

7.92mm



For: **PFAFF** (百福) 120. 122. 141-146.
142-720. 142-721.151. 155. 175-196.
191-196. 194-720.871-893

YZH-810-10 HSH-10-100 KRT136-M

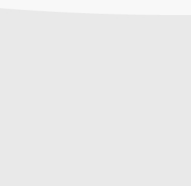
7.93mm



For: **SINGER** (胜家) 21W162. 110K. 110W124. 128
MITSUBISHI (三菱) PB-810. 810-10. 820. 820-10.
840. 840-10. PN-840
840-10FP. LS5-5110. 5120

YZH-PF151 HPF-151

7.92mm



For: **PFAFF** (百福) 120. 122. 141-146.
142-720. 142-721.151. 155. 175-196.
191-196. 194-720.871-893

YZH-DU271 HDU-271

7.24mm



For: **DURKOPP** (杜克普) 271

YZH-842 HG12-15L KRT842H-S

9.52mm



For: **BROTHER** (兄弟) LT2-B842-3, B841-3
JACK (杰克) JK5842-3
PROTEX (通宇) TY-B842-3
ZOJE (中捷) ZJ842
SIRUBA (高林) T828-4-ML,T828-47-ML
TYPICAL (标准) GC6842M

YZH-236 HSH-36-2 KRT236

7.93mm



For: **SINGER** (胜家) 236G120. 124. 125
130-132. 236W

YZH-842H HG12-15L(H) KRT842H-R

9.52mm



For: **BROTHER** (兄弟) LT2-B841-5,B842-5
(heavy materials)(厚料)
PROTEX (通宇) TY-B842-5
TYPICAL (标准) GC6842H
ZOJE (中捷) 842-5

YZH-8-20 HSH-8-20 KRP108-R

6.35mm



For: **SINGER** (胜家) 108U20. 108U30
DURKOPP (杜克普) 460

YZH-845 HG12-15LC KRT845BK

9.52mm



For: **BROTHER** (兄弟) LT2-B845-3
JUKI (重机) LH-3168
JACK (杰克) JK5845-3
TYPICAL (标准) GC6845H
ZOJE (中捷) 845
SIRUBA (高林) T828-45-H,-M,T828-48-L

长轴小型旋梭系列
LONG AXIS OF THE SMALL HOOK SERIES

YZH-831 HSH-12-15L KRT12-5B

9.52mm



For: **BROTHER** (兄弟) LT2-831-1.3B832-1.3B833
SEIKO (精工) LTW-26.27.27B.27BM
NITAKA (日高) TC2-B842
SUNSTAR (日星) KM2-740B
SICAMA (安机) LT2-B842

YZH-845H



For: **BROTHER** (兄弟) LT2-B845-5,-7,-B848-1
TL-848A,TN-845A
JACK (杰克) JK845-5

YZH-831H HSH-12-15L(H) KRT12-5BHR

9.52mm



For: **BROTHER** (兄弟) LT2-B831-5.B832-5
(heavy materials)(厚料)
GOLDEN WHEEL (金轮) CS-3100-3,
CS-8J2-3,-5,-871

YZH-265 HSH-12-15M KRT12-5M

9.52mm



For: **MITSUBISHI** (三菱) DN-260.260-10
DN-265.265-10
LT2-220-M.2220M.220.2220.L
UNICORN (神马) LT2-H320.H321
TYPICAL (标准) GC6220M
HIGHLEAD (海菱) GC20518-M

YZH-835 HSH-12-15LC KRT12-5BK

9.52mm



For: **BROTHER** (兄弟) LT2-B835-3.5.800
SEIKO (精工) LTW-27BK
CONSEW (康秀) 327R-1
(corner sewing machine)
GOLDEN WHEEL (金轮) CS-315,
CS-3150-5 CS-875-3

YZH-275 HSH-12C KRT12-5MK

9.52mm



For: **MITSUBISHI** (三菱) DN-275-10.10K
UNICORN (神马) LT2-H240-MOB
(corner sewing machine)
TYPICAL (标准) GC6240M
HIGHLEAD (海菱) GC20528-M

YZH-1152 HSH-12(2) KRT12-5J

9.52mm



For: **JUKI** (重机) LH-1152
SUNGOOD (双角) GC0501

YZH-PF545 HPF-545 KRT545

7.91mm



For: **PFAFF** (百福) 541-546. 551-555
591-596. 544-720
KING'S (王品) HC-616. 618
(large capacity hook)

YZH-1152(2)TR HSH-12-15(2)TR KRT12-5JCI

9.52mm



For: **JUKI** (重机) LH-1152-4.5
(under trimming machine) (自动剪线)

YZH-PF545(B) HPF-545(B)

7.91mm



For: **PFAFF** (百福) 541-546. 551-555
591-596. 542-720
(large capacity hook, full gib)

YZH-1162(L) HSH-12-62C(L) KRT12-5JK3-L

9.52mm



For: **JUKI** (重机) LH-1162
SICAMA (安机) (TASICO) SC-1162-5
(left hand) (左手)

**长轴大型旋梭系列
LONG AXIS OF THE LANGE HOOK SERIES**

YZH2-100-22 HSH-12-15MM(V) KRT12-5LMC

9.52mm



For: **mitsubishi** (三菱) DU-100-22.105-22.
107.120-22.122
125-22.127.LU2-400B
420-BOB.4400.4420
(slotted shank)
HIGHLEAD (海菱) GC20618-1
GC20618-2

YZH-1162(R) HSH-12-62C(R) KRT12-5JK3-R

9.52mm



For: **JUKI** (重机) LH-1162
SICAMA (安机) (TASICO)SC-1162-5
(right hand) (右手)

YZH2-260-22 HSH-12-15MM KRT12-5LM

9.52mm



For: **mitsubishi** (三菱)
DN260-22.262.265-22.267
LT2-220-B.220-BOB
2220-B.2220-BOB
NITAKA (日高) TC2-B872
TYPICAL (标准) GC6220B
HIGHLEAD (海菱) GC20518-B

YZH-111 HSH-11-55 KRT11-5

9.52mm



For: **JUKI** (重机) LU-53. 55. 562
SEIKO (精工) STW-6.7.7B.8.8B.8BV.8M
8BM.8V.8VM.8VP.8VPM.8BVM
SINGER (胜家) 111W155.156.211G155.156.211U165
166.211U365/6.211W151.155
CONSEW (康秀) 137.139R-1.224R-1.225VMG.226RVM-
(slotted shank)

YZH2-872 HG12M(BR) KRT872L

9.52mm



For: **BROTHER** (兄弟) LT2-B872-3,-5,
TN-872A-3,-5
SIRUBA (高林) 7828-72-048-H,M
TYPICAL (标准) GC6872H.6872M
JACK (杰克) JK5872-3
GEMSY (宝石) 872
ZOJE (中捷) 872

YZH-516 HSH-12-15 KRT12-5S

9.52mm



For: **JUKI** (重机) LH-51.51-10
LH-516.517.518.LU-53-7.562A
SINGER (胜家) 112W115-139

YZH2-875 HG12MC(1) KRT875LK

9.52mm



For: **BROTHER** (兄弟) LT2-B875,-3,-5,-7
SIRUBA (高林) T828-75-048-M

**短轴大型旋梭系列
SHORT AXIS LANGE HOOK SERIES**

YZH2-875TR HG12MC(1) TR KRT875LC

9.52mm



For: **BROTHER** (兄弟) T-875B-40 BAS-6200
TYPICAL (标准) GC6872MD3.6875HD3.
6875MD3
ZOJE (中捷) 875-D3
SIRUBA (高林) T828-72-H-U.-75-M-U

YZH2-1182(R) HSH-12M-82C(R) KRT12-5LJK3-R

9.52mm



For: **JUKI** (重机) LH-1182
SICAMA (安机) (TASICO)SC-1182-5
SHANGGONG (上工) GD8-7
(right hand) (右手)

YZH2-275-20 HSH-12MC KRT12-5LMK

9.52mm



For: **MITSUBISHI** (三菱) DN-275-20.LT2-240-B.2240-B
NITAKA (日高) TC2-B875
SICAMA (安机) (TASICO)LT2-B875
UNICORN (神马) LT2-H240-BOB
(corner sewing machine)
TYPICAL (标准) GC6240B
HIGHLEAD (海菱) GC20528-B,GC20638

YZH2-563 HSH-12-15MMJ KRT11-5LJS

9.52mm



For: **JUKI** (重机) LU-563
(slotted shank)

YZH2-837 HSH-12-15MM(5) KRT-LS2-R

9.52mm



For: **BROTHER** (兄弟) LT2-B837
SEIKO (精工) LLW-7L.7BL.8L.8BL
LSW-6L.7L.7L-TA
LLWH-7L-TA.8L-TA.28BL-TA
CONSEW (康秀) 244B.254B.255RB.333R.339R.

YZH2-838 HSH-12-15MMB(5) KRT-LS2-S

9.52mm



For: **BROTHER** (兄弟) LT2-B838
SEIKO (精工) LLW-27L.27BL.28.28L
28BL.LSW-27L.27BL
27BLM.28L.28BL.LTW-27BLM
CONSEW (康秀) 333B.333RB-1.339.RB-1.333RBL-1
(full gib, slotted shank)

YZH2-1182(L) HSH-12M-82C(L) KRT12-5LJK3-L

9.52mm



For: **JUKI** (重机) LH-1182
SICAMA (安机) (TASICO)SC-1182-5
SHANGGONG (上工) GD8-7
(left hand) (左手)

摆梭

摆梭系列
SHUTTLE HOOK SERIES

JS430 HG12MC(1) SH430

9.52mm



For: **BROTHER** (兄弟) LK3-B4300E,B430E,
B4310E,B431E,B4320E,
B432E,B434E,B435E,
B4350E,B436,B4380E,
B438E,B411
MITSUBISHI (三菱) PLK-03BTA,
-0804,-E0504

JS1850 HG12MC(1) SH280

9.52mm

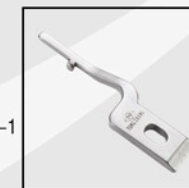


For: **JUKI** (重机) LK-1850 LK-1850C
LK-1851 LK-1851C LK-1900
GOLDEN WHEEL (金轮) CS-3500,8150
TAKING (天王星) TK-1800,1814,1818,
1821,1828,1836,1842
YXSM (裕祥) YU-1850-M

定位钩

定位钩系列
POSITIONING HOOK SERIES

YZH-8500



For: **JUKI** (重机) DDL-8500

YZH-8500-7



For: **JUKI** (重机) DDL-8500-7,8700,9000

YZH-1152 HSH-12(2) KRT12-5J

9.52mm



For: **JUKI** (重机) LH-1152
SUNGOOD (双角) GC0501

YZH-PF545 HPF-545 KRT545

7.91mm



For: **PFAFF** (百福) 541~546. 551~555
591~596. 544~720
KING'S (王品) HC-616. 618
(large capacity hook)

YZH-1152(2)TR HSH-12-15(2)TR KRT12-5JCI

9.52mm



For: **JUKI** (重机) LH-1152-4.5
(under trimming machine) (自动剪线)

YZH-PF545(B) HPF-545(B)

7.91mm



For: **PFAFF** (百福) 541~546. 551~555
591~596. 542~720
(large capacity hook, full gib)

YZH-1162(L) HSH-12-62C(L) KRT12-5JK3-L

9.52mm



For: **JUKI** (重机) LH-1162
SICAMA (安机) (TASICO) SC-1162-5
(left hand) (左手)

**长轴大型旋梭系列
LONG AXIS OF THE LANGE HOOK SERIES**

YZH2-100-22 HSH-12-15MM(V) KRT12-5LMC

9.52mm



For: **MITSUBISHI** (三菱) DU-100-22.105-22.
107.120-22.122
125-22.127.LU2-400B
420-BOB.4400.4420
(slotted shank)
HIGHLEAD (海菱) GC20618-1
GC20618-2

YZH-1162(R) HSH-12-62C(R) KRT12-5JK3-R

9.52mm



For: **JUKI** (重机) LH-1162
SICAMA (安机) (TASICO)SC-1162-5
(right hand) (右手)

YZH2-260-22 HSH-12-15MM KRT12-5LM

9.52mm



For: **MITSUBISHI** (三菱)
DN260-22.262.265-22.267
LT2-220-B.220-BOB
2220-B.2220-BOB
NITAKA (日高) TC2-B872
TYPICAL (标准) GC6220B
HIGHLEAD (海菱) GC20518-B

YZH-111 HSH-11-55 KRT11-5

9.52mm



For: **JUKI** (重机) LU-53. 55. 562
SEIKO (精工) STW-6.7.7B.8.8B.8BV.8M
8BM.8V.8VM.8VP.8VPM.8BVM
SINGER (胜家) 111W155.156.211G155.156.211U165
166.211U365/6.211W151.155
CONSEW (康秀) 137.139R-1.224R-1.225VMG.226RVM-
(slotted shank)

YZH2-872 HG12M(BR) KRT872L

9.52mm



For: **BROTHER** (兄弟) LT2-B872-3,-5,
TN-872A-3,-5
SIRUBA (高林) 7828-72-048-H,M
TYPICAL (标准) GC6872H.6872M
JACK (杰克) JK5872-3
GEMSY (宝石) 872
ZOJE (中捷) 872

YZH-516 HSH-12-15 KRT12-5S

9.52mm



For: **JUKI** (重机) LH-51.51-10
LH-516.517.518.LU-53-7.562A
SINGER (胜家) 112W115-139

YZH2-875 HG12MC(1) KRT875LK

9.52mm



For: **BROTHER** (兄弟) LT2-B875,-3,-5,-7
SIRUBA (高林) T828-75-048-M

**短轴大型旋梭系列
SHORT AXIS LANGE HOOK SERIES**

YZH2-875TR HG12MC(1) TR KRT875LC

9.52mm



For: **BROTHER** (兄弟) T-875B-40 BAS-6200
TYPICAL (标准) GC6872MD3.6875HD3.
6875MD3
ZOJE (中捷) 875-D3
SIRUBA (高林) T828-72-H-U.-75-M-U

YZH2-1182(R) HSH-12M-82C(R) KRT12-5LJK3-R

9.52mm



For: **JUKI** (重机) LH-1182
SICAMA (安机) (TASICO)SC-1182-5
SHANGGONG (上工) GD8-7
(right hand) (右手)

YZH2-275-20 HSH-12MC KRT12-5LMK

9.52mm



For: **MITSUBISHI** (三菱) DN-275-20.LT2-240-B.2240-B
NITAKA (日高) TC2-B875
SICAMA (安机) (TASICO)LT2-B875
UNICORN (神马) LT2-H240-BOB
(corner sewing machine)
TYPICAL (标准) GC6240B
HIGHLEAD (海菱) GC20528-B,GC20638

YZH2-563 HSH-12-15MMJ KRT11-5LJS

9.52mm



For: **JUKI** (重机) LU-563
(slotted shank)

YZH2-837 HSH-12-15MM(5) KRT-LS2-R

9.52mm



For: **BROTHER** (兄弟) LT2-B837
SEIKO (精工) LLW-7L.7BL.8L.8BL
LSW-6L.7L.7L-TA
LLWH-7L-TA.8L-TA.28BL-TA
CONSEW (康秀) 244B.254B.255RB.333R.339R.

YZH2-838 HSH-12-15MMB(5) KRT-LS2-S

9.52mm



For: **BROTHER** (兄弟) LT2-B838
SEIKO (精工) LLW-27L.27BL.28.28L
28BL.LSW-27L.27BL
27BLM.28L.28BL.LTW-27BLM
CONSEW (康秀) 333B.333RB-1.339.RB-1.333RBL-1
(full gib, slotted shank)

YZH2-1182(L) HSH-12M-82C(L) KRT12-5LJK3-L

9.52mm



For: **JUKI** (重机) LH-1182
SICAMA (安机) (TASICO)SC-1182-5
SHANGGONG (上工) GD8-7
(left hand) (左手)

摆梭

摆梭系列
SHUTTLE HOOK SERIES

JS430 HG12MC(1) SH430

9.52mm



For: **BROTHER** (兄弟) LK3-B4300E,B430E,
B4310E,B431E,B4320E,
B432E,B434E,B435E,
B4350E,B436,B4380E,
B438E,B411
MITSUBISHI (三菱) PLK-03BTA,
-0804,-E0504

JS1850 HG12MC(1) SH280

9.52mm

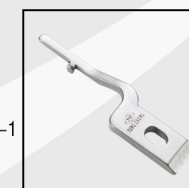


For: **JUKI** (重机) LK-1850 LK-1850C
LK-1851 LK-1851C LK-1900
GOLDEN WHEEL (金轮) CS-3500,8150
TAKING (天王星) TK-1800,1814,1818,
1821,1828,1836,1842
YXSM (裕祥) YU-1850-M

定位钩

定位钩系列
POSITIONING HOOK SERIES

YZP-J8500



For: **JUKI** (重机) DDL-8500

YZP-J8500-7



For: **JUKI** (重机) DDL-8500-7,8700,9000

梭壳

梭芯套系列
BOBBIN COVER SERIES

BC-31-15 工业用 INDUSTRIAL USE 普通型 CB TYPE



62740

For: **SINGER** (胜家) 31-15,18,44-10,12, 331K,431D
CONSEW (康秀) 30

BC-251 工业用 INDUSTRIAL USE 旋转型 ROTATING TYPE



251

For: **ANKAI** (安凯) AK-82800,82800-F 82800-G,82801-1,-2

BC-107(2) 工业用 INDUSTRIAL USE 特殊型 SPECIAL TYPE



241404/224441

with Split Tension Spring.
For: **SINGER** (胜家) 107G.107W3,14,15,50 143W1.2.3.18.307G2.
JUKI (重机) LBH-761,762,763
SUNGOOD (双角) GF11001

BC-HA1 家用 HOUSEHOLD 普通型 CB TYPE



15277

with Ns tension spring
For: **SINGER** (胜家) 15K30.83.16cl. 17-23.-u123-u133

BC-LK(B2) 工业用 INDUSTRIAL USE 普通型 CB TYPE



159610-101

with NBL-101 Spring
For: **BROTHER** (兄弟) LK3-B430,-B431, -B432,-B433, -B434,-B435, -B438,BAS-303-330,BAS-555 430 摆梭梭壳

BC-251-NBL 工业用 INDUSTRIAL USE 旋转型 ROTATING TYPE



251-NBL

For: **ANKAI** (安凯) AK-82800-D 82801-1D,82801-2D

BC-107(2)-NBL 工业用 INDUSTRIAL USE 特殊型 SPECIAL TYPE



224441NBL

with NBL-603 Spring.
For: **SINGER** (胜家) 107G.107W3,14,15,50 143W1.2.3.18.307G2.
JUKI (重机) LBH-761
BROTHER (兄弟) LH4-B814,-2-3,-4

BC-15-88 家用 HOUSEHOLD 普通型 CB TYPE



125291

For: **SINGER** (胜家) 15K88.90.91
JUKI (重机) AMS-215P

BC-LK(J)-NBL 工业用 INDUSTRIAL USE 普通型 CB TYPE



B1836-232-OAO

with NBL-101 Spring
For: **JUKI** (重机) LK-232,-237,-239,-322

BC-DBZ(1) 工业用 INDUSTRIAL USE 旋转型 ROTATING TYPE



117596-001

(18mm Opening)
For: **BROTHER** (兄弟) TZ1.LE2.BAS-400
JUKI (重机) LZ (except-405.-407.-581. -582.-583.-586.-1280.-1286.-1287) 小绣花梭芯套

BC-457(NS) 工业用 INDUSTRIAL USE 特殊型 SPECIAL TYPE



502530NS

For: **CONSEW** (康秀) 347.375R.376R.
JUKI (重机) LZ-1285,-1286,-1287.
BROTHER (兄弟) LZ2-B852,-853,-854.
SINGER (胜家) 457G.457U
JACK (杰克) JK457
ZOJE (中捷) ZJ457A

BC-HZ3(NS) 家用 HOUSEHOLD 人字缝型 ZIG ZAG TYPE



JO1313Z

(12.3mm slot)
with Ns tension spring

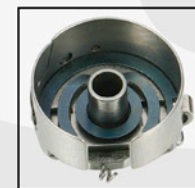
BC-LK(J3) 工业用 INDUSTRIAL USE 普通型 CB TYPE



B1828-980-OAB

For: **JUKI** (重机) AMS-210A,-12A, LK-1850. 1850 摆梭梭壳

BC-DBZ(1)-NBL6 工业用 INDUSTRIAL USE 旋转型 ROTATING TYPE



117596-001NBL6

with NBL-406 Speing
For: **BROTHER** (兄弟) TZ1.LE2.BAS-400
JUKI (重机) LZ (except-405.-407.-581. -582.-583.-586.-1280.-1286.-1287) 小绣花带铜片梭芯套

BC-LBH771 工业用 INDUSTRIAL USE 特殊型 SPECIAL TYPE



B1810-771-OAO

For: **JUKI** (重机) LBH-771.-772.-773-781-4

BC-HR306 家用 HOUSEHOLD 旋转型 ROTATING TYPE



173058

For: **SINGER** (胜家) 306.319

BC-DB1 工业用 INDUSTRIAL USE 旋转型 ROTATING TYPE



52237

For: **SINGER** (胜家) 95.96.103.188U.195K. 196K.245 适用于普通平车

BC-DBZ(2) 工业用 INDUSTRIAL USE 旋转型 ROTATING TYPE



B1837-586-OAO

(18mm Opening)
For: **JUKI** LZ-586 小人字梭芯套

BC-DBM(1) 工业用 INDUSTRIAL USE 大型 LARGE TYPE



6-7

For: **BROTHER** (兄弟) D82B745-7.B797-5
TAJIMA (田岛) TMB-E.TMB-W.TMW
JUKI (重机) DDL-201S
YAKUMO (大富豪) DBU-175L-3
WANPING (菟坪) GC6-7

BC-HR1 家用 HOUSEHOLD 旋转型 ROTATING TYPE



For: **BROTHER** (兄弟)

BC-DB1-NBL1 工业用 INDUSTRIAL USE 旋转型 ROTATING TYPE



52237NBL1

For: **SINGER** (胜家) 95.96.103.188U.195K. 196K.245 适用于电脑自动剪线平车

BC-DBZ(3) 工业用 INDUSTRIAL USE 旋转型 ROTATING TYPE



541678/410025

(12mm Opening)
For: **ELTAC** 750 series.
SINGER (胜家) 20U.
TAJIMA (田岛) 大绣花梭芯套

BC-DBM(1)NBL3 工业用 INDUSTRIAL USE 大型 LARGE TYPE



6-7NBL

whit NBL-1303 Spring
For: **BROTHER** (兄弟) D82B745-7.B797-5
TAJIMA (田岛) TMB-E.TMB-W.TMW
JUKI (重机) DDL-201S
YAKUMO (大富豪) DBU-175L-3
WANPING (菟坪) GC6-7

梭壳

梭芯套系列
BOBBIN COVER SERIES

BC-31-15 工业用 INDUSTRIAL USE 普通型 CB TYPE



For: **SINGER** (胜家) 31-15,18,44-10,12, 331K,431D
CONSEW (康秀) 30

62740

BC-251 工业用 INDUSTRIAL USE 旋转型 ROTATING TYPE



For: **ANKAI** (安凯) AK-82800,82800-F 82800-G,82801-1,-2

251

BC-107(2) 工业用 INDUSTRIAL USE 特殊型 SPECIAL TYPE



with Split Tension Spring.
For: **SINGER** (胜家) 107G.107W3,14,15,50 143W1.2.3.18.307G2.
JUKI (重机) LBH-761,762,763
SUNGOOD (双角) GF11001

241404/224441

BC-HA1 家用 HOUSEHOLD 普通型 CB TYPE



with Ns tension spring
For: **SINGER** (胜家) 15K30.83.16cl. 17-23.-u123-u133

15277

BC-LK(B2) 工业用 INDUSTRIAL USE 普通型 CB TYPE



with NBL-101 Spring
For: **BROTHER** (兄弟) LK3-B430,-B431, -B432,-B433,-B434,-B435, -B438,BAS-303-330,BAS-555 430 摆梭梭壳

159610-101

BC-251-NBL 工业用 INDUSTRIAL USE 旋转型 ROTATING TYPE



For: **ANKAI** (安凯) AK-82800-D 82801-1D,82801-2D

251-NBL

BC-107(2)-NBL 工业用 INDUSTRIAL USE 特殊型 SPECIAL TYPE



with NBL-603 Spring.
For: **SINGER** (胜家) 107G.107W3,14,15,50 143W1.2.3.18.307G2.
JUKI (重机) LBH-761
BROTHER (兄弟) LH4-B814,-2-3,-4

224441NBL

BC-15-88 家用 HOUSEHOLD 普通型 CB TYPE



For: **SINGER** (胜家) 15K88.90.91
JUKI (重机) AMS-215P

125291

BC-LK(J)-NBL 工业用 INDUSTRIAL USE 普通型 CB TYPE



with NBL-101 Spring
For: **JUKI** (重机) LK-232,-237,-239,-322

B1836-232-OAO

BC-DBZ(1) 工业用 INDUSTRIAL USE 旋转型 ROTATING TYPE



(18mm Opening)
For: **BROTHER** (兄弟) TZ1.LE2.BAS-400
JUKI (重机) LZ (except-405.-407.-581. -582.-583.-586.-1280.-1286.-1287) 小绣花梭芯套

117596-001

BC-457(NS) 工业用 INDUSTRIAL USE 特殊型 SPECIAL TYPE



For: **CONSEW** (康秀) 347.375R.376R.
JUKI (重机) LZ-1285,-1286,-1287.
BROTHER (兄弟) LZ2-B852,-853,-854.
SINGER (胜家) 457G.457U
JACK (杰克) JK457
ZOJE (中捷) ZJ457A

502530NS

BC-HZ3(NS) 家用 HOUSEHOLD 人字缝型 ZIG ZAG TYPE



(12.3mm slot)
with Ns tension spring

JO1313Z

BC-LK(J3) 工业用 INDUSTRIAL USE 普通型 CB TYPE



For: **JUKI** (重机) AMS-210A,-12A, LK-1850. 1850 摆梭梭壳

B1828-980-OAB

BC-DBZ(1)-NBL6 工业用 INDUSTRIAL USE 旋转型 ROTATING TYPE



with NBL-406 Speing
For: **BROTHER** (兄弟) TZ1.LE2.BAS-400
JUKI (重机) LZ (except-405.-407.-581. -582.-583.-586.-1280.-1286.-1287) 小绣花带钢片梭芯套

117596-001NBL6

BC-LBH771 工业用 INDUSTRIAL USE 特殊型 SPECIAL TYPE



For: **JUKI** (重机) LBH-771.-772,-773-781-4

B1810-771-OAO

BC-HR306 家用 HOUSEHOLD 旋转型 ROTATING TYPE



For: **SINGER** (胜家) 306.319

173058

BC-DB1 工业用 INDUSTRIAL USE 旋转型 ROTATING TYPE



For: **SINGER** (胜家) 95.96.103.188U.195K. 196K.245 适用于普通平车

52237

BC-DBZ(2) 工业用 INDUSTRIAL USE 旋转型 ROTATING TYPE



(18mm Opening)
For: **JUKI** LZ-586 小人字梭芯套

B1837-586-OAO

BC-DBM(1) 工业用 INDUSTRIAL USE 大型 LARGE TYPE



For: **BROTHER** (兄弟) D82B745-7.B797-5
TAJIMA (田岛) TMB-E.TMB-W.TMW
JUKI (重机) DDL-201S
YAKUMO (大富豪) DBU-175L-3
WANPING (莞坪) GC6-7

6-7

BC-HR1 家用 HOUSEHOLD 旋转型 ROTATING TYPE



For: **BROTHER**. (兄弟)

BC-DB1-NBL1 工业用 INDUSTRIAL USE 旋转型 ROTATING TYPE



For: **SINGER** (胜家) 95.96.103.188U.195K. 196K.245 适用于电脑自动剪线平车

52237NBL1

BC-DBZ(3) 工业用 INDUSTRIAL USE 旋转型 ROTATING TYPE



(12mm Opening)
For: **ELTAC** 750 series.
SINGER (胜家) 20U.
TAJIMA (田岛) 大绣花梭芯套

541678/410025

BC-DBM(1)NBL3 工业用 INDUSTRIAL USE 大型 LARGE TYPE



whit NBL-1303 Spring
For: **BROTHER** (兄弟) D82B745-7.B797-5
TAJIMA (田岛) TMB-E.TMB-W.TMW
JUKI (重机) DDL-201S
YAKUMO (大富豪) DBU-175L-3
WANPING (莞坪) GC6-7

6-7NBL

BC-6-5 工业用 INDUSTRIAL USE 大型 LARGE TYPE



6-5

For: **BROTHER** (兄弟) DB2-B745-5
JUKI (重机) DDL-210H
MITSUBISHI (三菱) DB-325-22D.DY330-22D
WANPING (莞坪) GC6-5.6-6.6-9

SC181 工业用 INDUSTRIAL USE 大型 LARGE TYPE



AD190D411PO3

For: **MITSUBISHI** (三菱) PLK-A1710

BC-DBM(2)-NBL1 工业用 INDUSTRIAL USE 大型 LARGE TYPE



18045

whit NBL-1301 Spring
For: **CONSEW** (康秀) 206RB,208RB.
JUKI (重机) DNU-241H
SEIKO (精工) STH-3BL,-7BL,-8BL.
YAKUMO (大富豪) 280L.880LM
YAKING (天王星) TK-8BL

SC180J 工业用 INDUSTRIAL USE 大型 LARGE TYPE



B1828-210-OAO

For: **JUKI** (重机) AMS-206CGL

BC-DBM(Z1) 工业用 INDUSTRIAL USE 大型 LARGE TYPE



For: **CONEW** (康秀) 175.176.
TOYOTA (丰田) D530.-18E.-30P.
-101.-110.-120.
SEIKO (精工) LZH-EVL.-EVL
PFAFF (百福) KSM-200

BC-PF9076 百福 / 杜克普型 PFAFF/DURKOPP TYPE



9076

(9mm Opening)
For: **PFAFF** (百福) 133.134.232.234.260.300.
331.332.333.341.343.360.432.433.
434.437.438.439.461.463.465.
467.481.483.485.487.489.
SEIKO (精工) LSC-8B.-8BV
ADLER. (杜克普) 69,69-373,69-FA-373,1296
CONSEW (康秀) 277.

BC-DBM(Z2) 工业用 INDUSTRIAL USE 大型 LARGE TYPE



For: **TAJIMA** (田岛)

BC-PF9076-NBL 百福 / 杜克普型 PFAFF/DURKOPP TYPE



9076NBL

(9mm Opening)
For: **PFAFF** (百福) 133.134.232.234.260.300.
331.332.333.341.343.360.432.433.
434.437.438.439.461.463.465.
467.481.483.485.487.489.
SEIKO (精工) LSC-8B.-8BV
ADLER. (杜克普) 69-FA-373,1296
CONSEW (康秀) 277.

SC205H 工业用 INDUSTRIAL USE 大型 LARGE TYPE



B1828-205-OAA

For: **JUKI** (重机) AMS220

BC-PF9076(14) 百福 / 杜克普型 PFAFF/DURKOPP TYPE



(14mm Opening)
For: **PFAFF** (百福) 130.138.230.238.335.
SEIKO (精工) LSC-8BVC

BC-310A 工业用 INDUSTRIAL USE 大型 LARGE TYPE



S15902-201

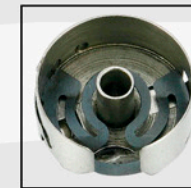
For: **BROTHER**. (兄弟) BAS.-304.310.311.
314.326.341.701
(thin material)

BC-PF9076(14)/NBL 百福 / 杜克普型 PFAFF/DURKOPP TYPE



with NBL-806 Spring
For: **PFAFF** (百福) 130.138.230.238.335.
SEIKO (精工) LSC-8BVC

BC-PF9076(TG)-NBL6 百福 / 杜克普型 PFAFF/DURKOPP TYPE



with NBL-806 Spring
For: **PFAFF** (百福)

CP-G12C (845)



For: **BROTHER** (兄弟) LT2-.B845
GEMSY (宝石) 845
TYPICAL (标准) GC6845H
ZOJE (中捷) 845
SIRUBA (高林) T828-45-H,
T828-48-L,

BC-DU211-NBL 百福 / 杜克普型 PFAFF/DURKOPP TYPE



211275NBL

with NBL-406 Spring
For: **DURKOPP** (杜克普) 211.212.213.219.220.
all sub class.

CP-62C (1162)



For: **JUKI** (重机) LH-1162.1162-4.5
SICAMA(TASICO) (安机) SC-1162-5.6
(with bobbin thread control spring)

BC-PF9076

梭帽系列
SHUTTLE CAP SERIES

CP-M82C (1182)



For: **JUKI** (重机) LH-1182.1182-4.5
SICAMA(TASICO) (安机) SC-1182-5.6
(large capacity cap with bobbin thread control spring)

CP-HPF151(10159)



For: **PFAFF**. (百福) 151 471-493
GOLDEN WHEEL (金轮) CS-861.862.8810.8820
YAKUMO (大富豪) 561-564

CP-G12MC(1) (875)



For: **BROTHER** (兄弟) LT2B875
GEMSY (宝石) 845
JACK (杰克) JK5875-3
ZOJE (中捷) 875

CP-HPF144TR(113192)



For: **PFAFF**. (百福) 144
GOLDEN WHEEL (金轮) CS-6111B.T.BT.
CS-6112B.T.BT.
SEIKO (精工) PWB-8GWC.FL.LC
SUNSTAR (日星) KM-867-7

CP-G12MC(1)TR (875TR)



For: **BROTHER** (兄弟) L72-B875,T-8752A-403
SUNSTAR (日星) KM-790BL,-7
ZOJE (中捷) 875-D3

CP-12C (835)



For: **BROTHER** (兄弟) LT2-B835-3.5.800
JUKI (重机) LH-528
GEMSY (宝石) 2000-2M
(corner sewing machine)
TYPICAL (标准) GC6240M,GC6240MD

SCP545(341)



For: **JUKI** (重机) LS-321. LS-341
PFAFF (百福) 1242-720B.C.D.1242-748
B.C.D.1244-720.B544-720.B.B1C.
551-555(S.L) 551-553(SL)
591-596.C.D(SL)

BC-6-5 工业用 INDUSTRIAL USE 大型 LARGE TYPE



6-5

For: **BROTHER** (兄弟) DB2-B745-5
JUKI (重机) DDL-210H
MITSUBISHI (三菱) DB-325-22D.DY330-22D
WANPING (苑坪) GC6-5.6-6.6-9

SC181 工业用 INDUSTRIAL USE 大型 LARGE TYPE



AD190D411PO3

For: **MITSUBISHI** (三菱) PLK-A1710

BC-DBM(2)-NBL1 工业用 INDUSTRIAL USE 大型 LARGE TYPE



18045

whit NBL-1301 Spring
For: **CONSEW** (康秀) 206RB,208RB.
JUKI (重机) DNU-241H
SEIKO (精工) STH-3BL,-7BL,-8BL.
YAKUMO (大富豪) 280L.880LM
YAKING (天王星) TK-8BL

SC180J 工业用 INDUSTRIAL USE 大型 LARGE TYPE



B1828-210-OAO

For: **JUKI** (重机) AMS-206CGL

BC-DBM(Z1) 工业用 INDUSTRIAL USE 大型 LARGE TYPE



For: **CONEW** (康秀) 175.176.
TOYOTA (丰田) D530.-18E.-30P.
-101.-110.-120.
SEIKO (精工) LZH-EVL.-EVL
PFAFF (百福) KSM-200

BC-PF9076 百福 / 杜克普型 PFAFF/DURKOPP TYPE



9076

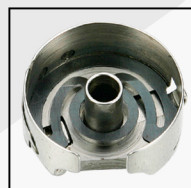
(9mm Opening)
For: **PFAFF** (百福) 133.134.232.234.260.300.
331.332.333.341.343.360.432.433.
434.437.438.439.461.463.465.
467.481.483.485.487.489.
SEIKO (精工) LSC-8B.-8BV
ADLER. (杜克普) 69,69-373,69-FA-373,1296
CONSEW (康秀) 277.

BC-DBM(Z2) 工业用 INDUSTRIAL USE 大型 LARGE TYPE



For: **TAJIMA** (田岛)

BC-PF9076-NBL 百福 / 杜克普型 PFAFF/DURKOPP TYPE



9076NBL

(9mm Opening)
For: **PFAFF** (百福) 133.134.232.234.260.300.
331.332.333.341.343.360.432.433.
434.437.438.439.461.463.465.
467.481.483.485.487.489.
SEIKO (精工) LSC-8B.-8BV
ADLER. (杜克普) 69-FA-373,1296
CONSEW (康秀) 277.

SC205H 工业用 INDUSTRIAL USE 大型 LARGE TYPE



B1828-205-OAA

For: **JUKI** (重机) AMS220

BC-PF9076(14) 百福 / 杜克普型 PFAFF/DURKOPP TYPE



(14mm Opening)
For: **PFAFF** (百福) 130.138.230.238.335.
SEIKO (精工) LSC-8BVC

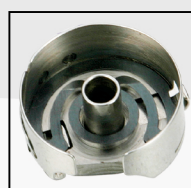
BC-310A 工业用 INDUSTRIAL USE 大型 LARGE TYPE



S15902-201

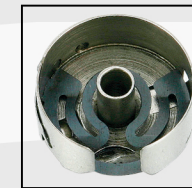
For: **BROTHER**. (兄弟) BAS.-304.310.311.
314.326.341.701
(thin material)

BC-PF9076(14)/NBL 百福 / 杜克普型 PFAFF/DURKOPP TYPE



with NBL-806 Spring
For: **PFAFF** (百福) 130.138.230.238.335.
SEIKO (精工) LSC-8BVC

BC-PF9076(TG)-NBL6 百福 / 杜克普型 PFAFF/DURKOPP TYPE



with NBL-806 Spring
For: **PFAFF** (百福)

CP-G12C (845)



For: **BROTHER** (兄弟) LT2-.B845
GEMSY (宝石) 845
TYPICAL (标准) GC6845H
ZOJE (中捷) 845
SIRUBA (高林) T828-45-H,
T828-48-L,

BC-DU211-NBL 百福 / 杜克普型 PFAFF/DURKOPP TYPE



211275NBL

with NBL-406 Spring
For: **DURKOPP** (杜克普) 211.212.213.219.220.
all sub class.

CP-62C (1162)



For: **JUKI** (重机) LH-1162.1162-4.5
SICAMA(TASICO) (安机) SC-1162-5.6
(with bobbin thread control spring)

BC-PF9076

梭帽系列
SHUTTLE CAP SERIES

CP-M82C (1182)



For: **JUKI** (重机) LH-1182.1182-4.5
SICAMA(TASICO) (安机) SC-1182-5.6
(large capacity cap with bobbin thread control spring)

CP-HPF151(10159)



For: **PFAFF**. (百福) 151 471-493
GOLDEN WHEEL (金轮) CS-861.862.8810.8820
YAKUMO (大富豪) 561~564

CP-G12MC(1) (875)



For: **BROTHER** (兄弟) LT2B875
GEMSY (宝石) 845
JACK (杰克) JK5875-3
ZOJE (中捷) 875

CP-HPF144TR(113192)



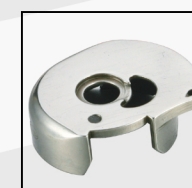
For: **PFAFF**. (百福) 144
GOLDEN WHEEL (金轮) CS-6111B.T.BT.
CS-6112B.T.BT.
SEIKO (精工) PWB-8GWC.FL.LC
SUNSTAR (日星) KM-867-7

CP-G12MC(1)TR (875TR)



For: **BROTHER** (兄弟) L72-B875,T-8752A-403
SUNSTAR (日星) KM-790BL,-7
ZOJE (中捷) 875-D3

CP-12C (835)



For: **BROTHER** (兄弟) LT2-B835-3.5.800
JUKI (重机) LH-528
GEMSY (宝石) 2000-2M
(corner sewing machine)
TYPICAL (标准) GC6240M,GC6240MD

SCP545(341)



For: **JUKI** (重机) LS-321. LS-341
PFAFF (百福) 1242-720B.C.D.1242-748
B.C.D.1244-720.B544-720.B.B1C.
551-555(S.L) 551-553(SL)
591-596.C.D(SL)

携手开拓 共创辉煌
Open Up New Field Hand In Hand
Together Create Great Splendor

勇耀宗旨

把质量做得更好 守交期满足客户 使你我合作共赢
欢迎各位海内外朋友光临指导

"Yongyao" objective:

It endeavors to make better quality
And prompt delivery to satisfy the customer's requirements
Fulfill win-win to operation with each other
Welcome vast domestic and overseas friends come
to visit and give directions to us



企业简介 ENTERPRISE BRIEF INTRODUCTION

宁波市鄞州勇耀缝制机械有限公司前名为宁波市勇跃缝纫机零件厂,公司坐落于东海之滨美丽的沿海城市-----宁波。

公司自一九九一年成立以来一直致力于产品的不断改进与创新,历经二十多年的发展,现已形成平缝、曲折缝、双针、绣花等多元化多系列百余个品种,公司拥有员工五百余名,其中大专以上学历及科研人员八十余名,能进行自主的产品改进与新产品的研发,技术核心竞争能力已处于同行业领先水平。

公司拥有一系列数控车床、数控磨床、数控铣床等先进加工设备,同时在产品检测方面建立了严谨的管理体系,为良好的品质保证奠定了坚实的基础。

勇耀公司愿与广大客户与时俱进、抓住机遇、携手共进,搏击商海,迎来辉煌的明天。

The former name of Ningbo City Yinzhou Yongyao Sewing Machinery Co., Ltd. is Ningbo City Yongyue Sewing Machine Parts Factory. The company is located in Ningbo, a beautiful coastal city along the East China Sea.

Our company has been engaging in the continuous improvements and innovations of the goods since its establishment in 1991. Through twenty years' development, at present it has formed more than a hundred plural and multi-series varieties such as plain seaming, zigzag sewing, two-needle, embroidery etc. It owns above five hundred workers and staff members among which there are over eighty scientific research personnel with higher than College Certificate. It can independently carry out the product improvement and R & D to new goods. Its competitive power of the core technology is in the leading level among the same trade.

This company possesses a series of the advanced machining equipments such as NC lathe, NC grinding machine, NC miller and so on. Meanwhile it establishes the rigorous managing system in aspect of the product detection. It lays a solid foundation for the sound quality guarantee.

Yongyao Company is willing to keep abreast of the times together with vast customers. Let's grasp the good opportunities, advance together hand in hand to fight in the business world in order to welcome a splendid tomorrow.

携手开拓 共创辉煌
Open Up New Field Hand In Hand
Together Create Great Splendor

勇耀宗旨

把质量做得更好 守交期满足客户 使你我合作共赢
欢迎各位海内外朋友光临指导

"Yongyao" objective:

It endeavors to make better quality
And prompt delivery to satisfy the customer's requirements
Fulfill win-win to operation with each other
Welcome vast domestic and overseas friends come
to visit and give directions to us



企业简介 ENTERPRISE BRIEF INTRODUCTION

宁波市鄞州勇耀缝制机械有限公司前名为宁波市勇跃缝纫机零件厂,公司坐落于东海之滨美丽的沿海城市-----宁波。

公司自一九九一年成立以来一直致力于产品的不断改进与创新,历经二十多年的发展,现已形成平缝、曲折缝、双针、绣花等多元化多系列百余个品种,公司拥有员工五百余名,其中大专以上学历及科研人员八十余名,能进行自主的产品改进与新产品的研发,技术核心竞争能力已处于同行业领先水平。

公司拥有一系列数控车床、数控磨床、数控铣床等先进加工设备,同时在产品检测方面建立了严谨的管理体系,为良好的品质保证奠定了坚实的基础。

勇耀公司愿与广大客户与时俱进、抓住机遇、携手共进,搏击商海,迎来辉煌的明天。

The former name of Ningbo City Yinzhou Yongyao Sewing Machinery Co., Ltd. is Ningbo City Yongyue Sewing Machine Parts Factory. The company is located in Ningbo, a beautiful coastal city along the East China Sea.

Our company has been engaging in the continuous improvements and innovations of the goods since its establishment in 1991. Through twenty years' development, at present it has formed more than a hundred plural and multi-series varieties such as plain seaming, zigzag sewing, two-needle, embroidery etc. It owns above five hundred workers and staff members among which there are over eighty scientific research personnel with higher than College Certificate. It can independently carry out the product improvement and R & D to new goods. Its competitive power of the core technology is in the leading level among the same trade.

This company possesses a series of the advanced machining equipments such as NC lathe, NC grinding machine, NC miller and so on. Meanwhile it establishes the rigorous managing system in aspect of the product detection. It lays a solid foundation for the sound quality guarantee.

Yongyao Company is willing to keep abreast of the times together with vast customers. Let's grasp the good opportunities, advance together hand in hand to fight in the business world in order to welcome a splendid tomorrow.

产品分解说明

产品组件说明



梭床与梭架的轴向间隙: 0.025-0.05
梭床与梭架的径向间隙: 0.02-0.055

- 梭床与梭架的配合间隙及导轨自身精度, 降低旋梭在长时间高速运行中导轨间的摩擦系数;
- 在一定热量下所产生的导轨膨胀系数, 仍保有足够的运行空间, 保持旋梭在高速运转下不出现卡塞现象。

NO.	名称
1	梭床
2	梭架
3	月圈
4	梭皮
5	油封盖
6	月圈螺钉
7	梭皮螺钉
8	塔子螺钉

产品包装



- 1、内包装外观为本公司外观专利, 呈 12 边形便于区分非本公司产品。
- 2、内包装防串防伪喷码易于区分防串仿冒我司伪劣产品。
- 3、独立的内包装易于保护产品和方便存放管理。
- 4、为保证顾客购买时有效辨别我司产品, 特申请外观设计专利。专利号: ZL 200530115177.8
- 5、中包装
纸料: 美国进口白皮纸
专用设计, 专利号: ZL 200530115180.X

产品重点部位说明

- 钩线头呈 R 状, 端面、侧面为斜角, 能有效的钩住线环并保证涤纶线的高速滑行, 形成美观的线迹。
- 钩线头与肚皮的交接处及整个过线部位粗糙度达 0.4 以下, 在高速滑行中不损伤缝线, 保证缝线的稳定性, 使缝制后的线迹保持原有的光泽。

- 钩线头上平面形状呈椭圆形, 易于钩住线环, 防止跳针, 便于线环高速滑行。
- 钩线头三角形过线部位粗糙度达 0.4 以下, 在线环高速滑行中不受到损伤及保证其稳定性, 保持缝制后线迹的原有光泽。
- 梭床孔底刻有“YZ”字样, 梭架内孔呈灰白色, 易于区分, 谨防仿冒。



涤纶线 (丝光线) 首选 THE BEST CHOICE FOR POLYESTER YARN

电脑平车



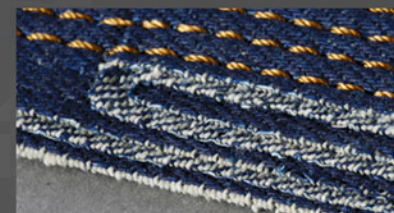
YZH-7.94BTR(P)

- 1、机针适用范围: 14#—22#
- 2、线型 (丝光线) 适用范围: 150D (603#、1 股) —500D (608#、6 股)
- 3、面料: 中厚 (牛仔) 1—8 层
- 4、面线涨力 (g): ≥150—350
- 5、缝速 针 / 分: 3500—4000



1. 多角度护针槽 (专利号: 2010201543110)
功能: 保证缝线不出现毛线和断线。
2. 钩线槽 (专利号: 2010201543267)
功能: 凹状形保证在钩线瞬间有足够的钩线空间。
3. 螺旋脱线面 (专利号: 2010201548792)
4. 定位 (专利号: 2010201548773)
5. 梭门槽 (专利号: 2010201548699)

缝纫效果图

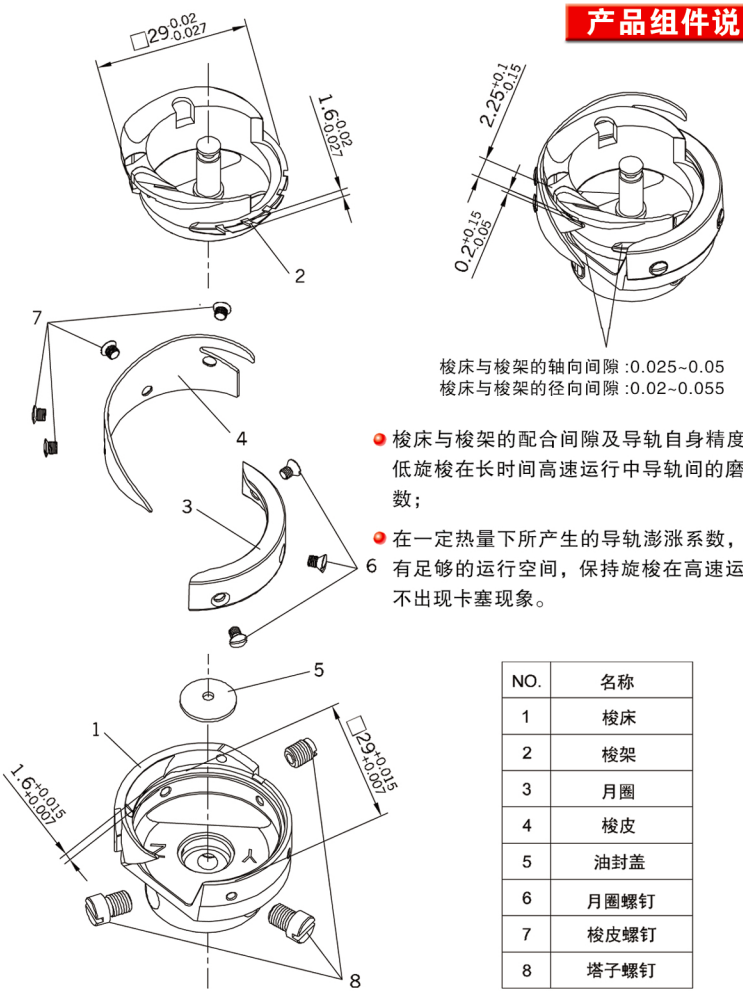


五大特点
五项专利
大小通吃



产品分解说明

产品组件说明




梭床与梭架的轴向间隙: 0.025-0.05
梭床与梭架的径向间隙: 0.02-0.055

- 梭床与梭架的配合间隙及导轨自身精度, 降低旋梭在长时间高速运行中导轨间的摩擦系数;
- 在一定热量下所产生的导轨膨胀系数, 仍保有足够的运行空间, 保持旋梭在高速运转下不出现卡塞现象。

NO.	名称
1	梭床
2	梭架
3	月圈
4	梭皮
5	油封盖
6	月圈螺钉
7	梭皮螺钉
8	塔子螺钉

产品包装



- 1、内包装外观为本公司外观专利, 呈 12 边形便于区分非本公司产品。
- 2、内包装防串防伪喷码易于区分防串仿冒我司伪劣产品。
- 3、独立的内包装易于保护产品和方便存放管理。
- 4、为保证顾客购买时有效辨别我司产品, 特申请外观设计专利。专利号: ZL 200530115177.8
- 5、中包装
纸料: 美国进口白皮纸
专用设计, 专利号: ZL 200530115180.X

产品重点部位说明

- 钩线头呈 R 状, 端面、侧面为斜角, 能有效的钩住线环并保证涤纶线的高速滑行, 形成美观的线道。
- 钩线头与肚皮的交接处及整个过线部位粗糙度达 0.4 以下, 在高速滑行中不损伤缝线, 保证缝线的稳定性, 使缝制后的线迹保持原有的光泽。

- 钩线头上平面形状呈椭圆形, 易于钩住线环, 防止跳针, 便于线环高速滑行。
- 钩线头三角形过线部位粗糙度达 0.4 以下, 在线环高速滑行中不受到损伤及保证其稳定性, 保持缝制后线道的原有光泽。
- 梭床孔底刻有“YZ”字样, 梭架内孔呈灰白色, 易于区分, 谨防仿冒。



涤纶线 (丝光线) 首选 THE BEST CHOICE FOR POLYESTER YARN

电脑平车



YZH-7.94BTR(P)

- 1、机针适用范围: 14#—22#
- 2、线型 (丝光线) 适用范围: 150D (603#、1 股) —500D (608#、6 股)
- 3、面料: 中厚 (牛仔) 1—8 层
- 4、面线涨力 (g): ≥150—350
- 5、缝速 针 / 分: 3500—4000



1. 多角度护针槽 (专利号: 2010201543110)
功能: 保证缝线不出现毛线和断线。
2. 钩线槽 (专利号: 2010201543267)
功能: 凹状形保证在钩线瞬间有足够的钩线空间。
3. 螺旋脱线面 (专利号: 2010201548792)
4. 定位 (专利号: 2010201548773)
5. 梭门槽 (专利号: 2010201548699)

缝纫效果图



五大特点
五项专利
大小通吃



垂直回转式旋梭 (DB型)

高速缝旋梭系列
HIGH-SPEED SEWING HOOK SERIES

YZH-7.94B HSH-7.94B KHS12-S



7.94mm
For: **BROTHER** (兄弟) DB2-B714-3.B753.
B795-013
JUKI (重机) DDL-127.227.541.555.5550
FEIYUE (飞跃) GC15-1,-2,-4
SIRUBA (高林) L818F-K1,-L1,-M1
TYPICAL (标准) GC40-1,-2,-4,GC6-1
JACK (杰克) JK8500

YZH-7.94B(G) HSH-7.94B KHS12-S



7.94mm
For: **BROTHER** (兄弟) DB2-B714-3.B753.
B795-013
JUKI (重机) DDL-127.227.541.555.5550
FEIYUE (飞跃) GC15-1,-2,-4
SIRUBA (高林) L818F-K1,-L1,-M1
TYPICAL (标准) GC40-1,-2,-4,GC6-1
JACK (杰克) JK8500
(gold base 金色内梭)

YZH-7.94B(Q) HSH-7.94B(Q)



7.94mm
For: **TOYOTA** (丰田) D1412-41, DI512-41
SHUNFA (顺发) SF888

YZH-7.94A HSH-7.94A KHS12-R



7.94mm
For: **BROTHER** (兄弟) DB2-B706-5.B714-5.
B755-5
GEMSY (宝石) 8700H,8900H
TYPICAL (标准) GC6-8,GC203
SIRUBA (高林) L818F-H,819,819-X1

YZH-7.94A1 HSH-7.94A1 KHS12-RB



7.94mm
(extra heavy materials) 厚料
(for big needle) 粗线

YZH-7.94AO HSH-7.94AO KHS12-RM



7.94mm
For: **FLYINGMAN** (飞人) GC900ZH
HIGHLEAD (海菱) GC188-H
GEMSY (宝石) 8700H
TYPICAL (标准) GC6-8
ZOJE (中捷) 8700H

YZH-614 HSH-614C KHS14-G



8.10mm
For: **UNION SPECIAL** (於仁) 61200.61300.
61400.61900.63400.
63900
93400.61300

(用于脚踏车)

高速自动切线旋梭系列
HIGH-SPEED AUTOMATIC CUTTING HOOK SERIES

YZH-7.94ATR HSH-7.94ATR KHS12-RP



7.94mm
For: **JUKI** (重机) DDL-5550u-4
GOLDEN WHEEL (金轮) CS-5150-BT,
6000-BT
SIRUBA (高林) L818-H1-13,
L818-X1-13

YZH-7.94BTR HSH-7.94BTR KHS12-SP



7.94mm
For: **JUKI** (重机) DDL-8700-7,DDL-9000SS
DLN-5410N-7
BROTHER (兄弟) DB2-B792-613,
-B793,-303,-305,-B795,-313
TYPICAL (标准) GC6-1-D3
JACK (杰克) JK8900D
ZOJE (中捷) ZJ8500-D3,ZJ8850-5-D3
TYPICAL (标准) GC6-1-D3

YZH-7.94BTR(P) HSH-7.94BTR KHS12-SP



7.94mm
For: **JUKI** (重机) DDL-8700-7,DDL-9000SS
DLN-5410N-7
BROTHER (兄弟) DB2-B792-613,
-B793,-303,-305,-B795,-313
TYPICAL (标准) GC6-1-D3
JACK (杰克) JK8900D
ZOJE (中捷) ZJ8500-D3,ZJ8850-5-D3
TYPICAL (标准) GC6-1-D3

涤纶线 (丝光线) 首选
THE BEST CHOICE FOR POLYESTER YARN

YZH-7.94BTR(C) HSH-7.94BTR KHS12-SP



7.94mm
For: **JUKI** (重机) DDL-8700-7,DDL-9000SS
DLN-5410N-7
BROTHER (兄弟) DB2-B792-613,
-B793,-303,-305,-B795,-313
TYPICAL (标准) GC6-1-D3
JACK (杰克) JK8900D
ZOJE (中捷) ZJ8500-D3,ZJ8850-5-D3
TYPICAL (标准) GC6-1-D3
(c base)
内梭镀碳 可在微油状态下使用

YZH-7.94BTR(3) HSH-7.94BTR(3) KHS12-SPM



7.94mm
For: **HIGHLEAD** (海菱) GC128-M-D3
TYPICAL (标准) GC6-1-D3

YZH-BTR(HPNG) HTH-BTR(HPNG)



7.94mm
For: **BROTHER** (兄弟) BAS-7610
(under trimming machine)(自动剪线)

低速缝旋梭系列
LOW-SPEED SEWING HOOK SERIES

YZH-Z16 DB1-Z16 KR24



7.24mm
For: **BROTHER** (兄弟) LE2-B861-1.
JUKI (重机) LZ-27.29.40.271.403
TYPICAL (标准) GG1-1,-2
SUNSTAR (日星) KLZ-371
ZOJE (中捷) 20U43
(needle slot:16mm)

YZH-7.94A(MTQ) HSH-7.94A(MTQ) KHS12-RY



7.94mm
For: **TAJIMA** (田岛) TME.TMEF.TMLE etc
BUTTERFLY (蝴蝶) GY4-1
TYPICAL (标准) GYD20-6
SUNSTAR (日星) SWF/A-WE1218.-T1201
(small hook) (小旋梭)

YZH-7.94A(MTQ)(C) HSH-7.94A(MTQ) KHS12-RY



7.94mm
For: **TAJIMA** (田岛) TME.TMEF.TMLE etc
BUTTERFLY (蝴蝶) GY4-1
TYPICAL (标准) GYD20-6
SUNSTAR (日星) SWF/A-WE1218.-T1201
(small hook) (小旋梭)

(c base)
内梭镀碳 可在微油状态下使用

YZH-7.94ATR(MTQ) HSH-7.94ATR(MTQ) KHS12-RYP



7.94mm
For: **TAJIMA** (田岛) TMBE. TME. TME-D
TMFD-C. TMFX-C TMLE. TMLG.
(small hook) (小旋梭)
(under trimming machine) (自动剪线)

YZH-7.94ATR(MTQ)(C) HSH-7.94ATR(MTQ) KHS12-RYP



7.94mm
For: **TAJIMA** (田岛) TMBE. TME. TME-D
TMFD-C. TMFX-C TMLE. TMLG.
(small hook) (小旋梭)
(under trimming machine) (自动剪线)

(c base)
内梭镀碳 可在微油状态下使用

YZH-7.24B DA1-B KR21-S



7.24mm
For: **FOR:JUKI** (重机) DDL-115,TL-72,-82,TR-72
mitsubishi (三菱) DB-320-10
LX2-371-MO
FEIYUE (飞跃) GC1-5,-6
DBU-175,-180,-750,-780,-N70
DSN-78,-80-2
SINGER (胜家) 95-40/94-40
GOLDEN WHEEL (金轮) CS-3600,-8000-20,
-8000-25,-8000-30

YZH-7.24BJZ HSH-7.24BJZ KHS11S-58



7.24mm
For: **JUKI** (重机) LZ-581.582.583
(needle slot:10mm)

YZH-Z(20) DB1-Z(20) KR24-U



7.24mm
For: **SINGER** (胜家) 20U.20U13.23
KERDER (客德) KD-20U
PANDA (JIANN LIAN) (建联) JU-20U
(needle slot:18mm)

YZH-PF134/ZSK HPF-134/ZSK



ZSK
(embroidry machine)

垂直回转式旋梭 (DB型)

高速缝旋梭系列
HIGH-SPEED SEWING HOOK SERIES

YZH-7.94B | **HSH-7.94B** | **KHS12-S**



7.94mm
For: **BROTHER** (兄弟) DB2-B714-3.B753.
B795-013
JUKI (重机) DDL-127.227.541.555.5550
FEIYUE (飞跃) GC15-1,-2,-4
SIRUBA (高林) L818F-K1,-L1,-M1
TYPICAL (标准) GC40-1,-2,-4,GC6-1
JACK (杰克) JK8500

YZH-7.94B(G) | **HSH-7.94B** | **KHS12-S**



7.94mm
For: **BROTHER** (兄弟) DB2-B714-3.B753.
B795-013
JUKI (重机) DDL-127.227.541.555.5550
FEIYUE (飞跃) GC15-1,-2,-4
SIRUBA (高林) L818F-K1,-L1,-M1
TYPICAL (标准) GC40-1,-2,-4,GC6-1
JACK (杰克) JK8500
(gold base 金色内梭)

YZH-7.94B(Q) | **HSH-7.94B(Q)**



7.94mm
For: **TOYOTA** (丰田) D1412-41, DI512-41
SHUNFA (顺发) SF888

YZH-7.94A | **HSH-7.94A** | **KHS12-R**



7.94mm
For: **BROTHER** (兄弟) DB2-B706-5.B714-5.
B755-5
GEMSY (宝石) 8700H,8900H
TYPICAL (标准) GC6-8,GC203
SIRUBA (高林) L818F-H,819,819-X1

YZH-7.94A1 | **HSH-7.94A1** | **KHS12-RB**



7.94mm
(extra heavy materials) 厚料
(for big needle) 粗线

YZH-7.94AO | **HSH-7.94AO** | **KHS12-RM**



7.94mm
For: **FLYINGMAN** (飞人) GC900ZH
HIGHLEAD (海菱) GC188-H
GEMSY (宝石) 8700H
TYPICAL (标准) GC6-8
ZOJE (中捷) 8700H

YZH-614 | **HSH-614C** | **KHS14-G**



8.10mm
For: **UNION SPECIAL** (於仁) 61200.61300.
61400.61900.63400.
63900
93400.61300

(用于脚踏车)

高速自动切线旋梭系列
HIGH-SPEED AUTOMATIC CUTTING HOOK SERIES

YZH-7.94ATR | **HSH-7.94ATR** | **KHS12-RP**



7.94mm
For: **JUKI** (重机) DDL-5550u-4
GOLDEN WHEEL (金轮) CS-5150-BT,
6000-BT
SIRUBA (高林) L818-H1-13,
L818-X1-13

YZH-7.94BTR | **HSH-7.94BTR** | **KHS12-SP**



7.94mm
For: **JUKI** (重机) DDL-8700-7,DDL-9000SS
DLN-5410N-7
BROTHER (兄弟) DB2-B792-613,
-B793,-303,-305,-B795,-313
TYPICAL (标准) GC6-1-D3
JACK (杰克) JK8900D
ZOJE (中捷) ZJ8500-D3,ZJ8850-5-D3
TYPICAL (标准) GC6-1-D3

YZH-7.94BTR(P) | **HSH-7.94BTR** | **KHS12-SP**



7.94mm
For: **JUKI** (重机) DDL-8700-7,DDL-9000SS
DLN-5410N-7
BROTHER (兄弟) DB2-B792-613,
-B793,-303,-305,-B795,-313
TYPICAL (标准) GC6-1-D3
JACK (杰克) JK8900D
ZOJE (中捷) ZJ8500-D3,ZJ8850-5-D3
TYPICAL (标准) GC6-1-D3

涤纶线 (丝光线) 首选
THE BEST CHOICE FOR POLYESTER YARN

YZH-7.94BTR(C) | **HSH-7.94BTR** | **KHS12-SP**



7.94mm
For: **JUKI** (重机) DDL-8700-7,DDL-9000SS
DLN-5410N-7
BROTHER (兄弟) DB2-B792-613,
-B793,-303,-305,-B795,-313
TYPICAL (标准) GC6-1-D3
JACK (杰克) JK8900D
ZOJE (中捷) ZJ8500-D3,ZJ8850-5-D3
TYPICAL (标准) GC6-1-D3
(c base)
内梭镀碳 可在微油状态下使用

YZH-7.94BTR(3) | **HSH-7.94BTR(3)** | **KHS12-SPM**



7.94mm
For: **HIGHLEAD** (海菱) GC128-M-D3
TYPICAL (标准) GC6-1-D3

YZH-BTR(HPNG) | **HTH-BTR(HPNG)**



7.94mm
For: **BROTHER** (兄弟) BAS-7610
(under trimming machine)(自动剪线)

低速缝旋梭系列
LOW-SPEED SEWING HOOK SERIES

YZH-Z16 | **DB1-Z16** | **KR24**



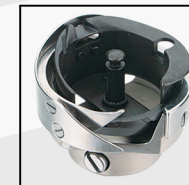
7.24mm
For: **BROTHER** (兄弟) LE2-B861-1.
JUKI (重机) LZ-27.29.40.271.403
TYPICAL (标准) GG1-1,-2
SUNSTAR (日星) KLZ-371
ZOJE (中捷) 20U43
(needle slot:16mm)

YZH-7.94A(MTQ) | **HSH-7.94A(MTQ)** | **KHS12-RY**



7.94mm
For: **TAJIMA** (田岛) TME.TMEF.TMLE etc
BUTTERFLY (蝴蝶) GY4-1
TYPICAL (标准) GYD20-6
SUNSTAR (日星) SWF/A-WE1218.-T1201
(small hook) (小旋梭)

YZH-7.94A(MTQ)(C) | **HSH-7.94A(MTQ)** | **KHS12-RY**



7.94mm
For: **TAJIMA** (田岛) TME.TMEF.TMLE etc
BUTTERFLY (蝴蝶) GY4-1
TYPICAL (标准) GYD20-6
SUNSTAR (日星) SWF/A-WE1218.-T1201
(small hook) (小旋梭)

(c base)
内梭镀碳 可在微油状态下使用

YZH-7.94ATR(MTQ) | **HSH-7.94ATR(MTQ)** | **KHS12-RYP**



7.94mm
For: **TAJIMA** (田岛) TMBE. TME. TME-D
TMFD-C. TMFX-C TMLE. TMLG.
(small hook) (小旋梭)
(under trimming machine) (自动剪线)

YZH-7.94ATR(MTQ)(C) | **HSH-7.94ATR(MTQ)** | **KHS12-RYP**



7.94mm
For: **TAJIMA** (田岛) TMBE. TME. TME-D
TMFD-C. TMFX-C TMLE. TMLG.
(small hook) (小旋梭)
(under trimming machine) (自动剪线)

(c base)
内梭镀碳 可在微油状态下使用

YZH-7.24B | **DA1-B** | **KR21-S**



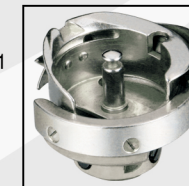
7.24mm
For: **JUKI** (重机) DDL-115,TL-72,-82,TR-72
DAIICHI (三菱) DB-320-10
LX2-371-MO
FEIYUE (飞跃) GC1-5,-6
DBU-175,-180,-750,-780,-N70
DSN-78,-80-2
SINGER (胜家) 95-40/94-40
GOLDEN WHEEL (金轮) CS-3600,-8000-20,
-8000-25,-8000-30

YZH-7.24BJZ | **HSH-7.24BJZ** | **KHS11S-58**



7.24mm
For: **JUKI** (重机) LZ-581.582.583
(needle slot:10mm)

YZH-Z(20) | **DB1-Z(20)** | **KR24-U**



7.24mm
For: **SINGER** (胜家) 20U.20U13.23
KERDER (客德) KD-20U
PANDA (JIANN LIAN) (建联) JU-20U
(needle slot:18mm)

YZH-PF134/ZSK | **HPF-134/ZSK**



ZSK
(embroidry machine)

大型旋梭系列
LAGER HOOK SEIRVES

YZH2-B1H(6-5) HSM-B1H KHS20-GTB



For: **BROTHER** (兄弟) DB2-B745-5,-B746-5,-8
JUKI (重机) DDL-201H
WANPING (莞坪) B727, GC0302

YZH2-A1(6-7) HSM-A1 KHS20-RTB



For: **BROTHER** (兄弟) DB2-B745-7, B797, B797-5
TAJIMA (田岛) TMB-E, TMB-W, TMW
JUKI (重机) DDL-201S
(heavy materials) (厚料)
WANPING (莞坪) GC6-5, GC6-6, GC6-7

YZH2-GC(6-10) HSM-A1HTR KHS20-R1



For: **TYPICAL** (标准) GC6-9, GC6-10
(extra heavy materials, thick lines)
HIGHLEAD (海菱) GC0388-D, GC128-B-D3
SIRUBA (高林) L819-X2-U, YF616-X2-U,
YF619-X2-U

YZH2-GC(2603)



For: **TYPICAL** (标准) GC2603 GC2605

YZH2-B(Q)TR HSM-B(Q)TR KHS20-SPNP



For: **SINGER** (胜家) 121D330AA
121C330AA, 369
(under trimming machine)
(自动剪线)

YZH2-ATR(1Q) HSM-ATR(1Q)



For: **BROTHER** (兄弟) BAS-412, 416, 423

YZH2-A(5) HSM-A(5) KHS20-RPEM2AO



For: **SEIKO** (精工) STH-3BL, 6BL, 7BL, 8BL,
8BL-25, 8BLC-BT
CONSEW (康秀) 206RB, 306RB
TYPICAL WANPING (莞坪标准)
TW1-0602

垂直回转式旋梭 (DP型)
高速人字型缝旋梭系列
HIGH-SPEED LAMBDROID SUTURE HOOK SERIES

YZH-251 DB1-Z(20) KRT251



For: **ANKAI** (安凯): AK-82800, 82800-D
82800-F, 82800-G
82801-1, 82801-2
82801-1D, 82801-2D

YZH-NJ(761) DP2-NJ KRP41-LH



For: **JUKI** (重机) LBH-761, 762, 763
DALIAN (大连) G13
HUANAN(SOUTH CHINA) (华南) G16-1
SHANGGONG (上工) G15
SUNGOOD (双角) GF11001

YZH-HJ(771) DP2-NJ771 KRP771



For: **JUKI** (重机) LBH-771-774, 781-784
TAKING (天王星) TK-888
DALIAN (大连) G18
JACK (杰克) JK781
PANDA (建联) JL-781

YZH-LB(814) DP2-LB KRP41-B



For: **BROTHER** (兄弟) LH4-B814

YZH-DP2(815) DP2-815



For: **BROTHER** (兄弟) LH4-B815
BAS-500

YZH-DP2(107) DP2 KRP41-S



For: **SINGER** (胜家) 107G, 107W1, 107W5, 17
SUNSTAR (日星) DPK-2
DUKOPP CADLER (杜克普) 252, 253,
255, 264, 91, 98

YZH-DP2(457) DP2-57(2) KRP 457



For: **SINGER** (胜家) 457G, 457A, 457U
BROTHER (兄弟) LZ2-B852, -B853, -B854
ZOJE (中捷) ZJ457A/B/D
JACK (杰克) JK457

YZH-DP2(LP457) DP2-57(2LP) KRP457-W



For: **SINGER** (胜家) 457G
(Long hook point)
YULUN (友伦) YLM-457A
TAKING (天王星) TK-4 57A, 457G, 457U
(Long hook point) (长梭钩头)

YZH-2280 DP2-57(2) KRP 457



For: **JACK** (重机) L2-2280, 2285

水平回转式旋梭
轴套小型旋梭系列
THE SLEEVES SMALL HOOK SERIES

YZH-515(J) HSH-21-40(J) KRT21-J



For: **JUKI** (重机) LH-512, -512-3, 515
SHANGGONG (上工) GC15-5-4D,
GD9, GD8-1

YZH-515H(AJ) HSH-21-40(AJ) KRT21-R



For: **JUKI** (重机) LH-512H, 515H
(Heavy materials) (厚料)
(short gib)

短轴小型旋梭系列
SHORT AXIS SMALL HOOK SERIES

YZH-820 HSH-31(6) KRT31-NR



For: **GOLDEN WHEEL** (金轮) CS-810, 820
NITAKA (日高) TC-810S, 820S
SUNSTAR (日星) KM-867, KPW-827B
HIGHLEAD (海菱) GC24018, 24518, 24818
TYPICAL WANPING (莞坪标准)
GC24016, 24080 TW5-810

YZH-810 HSH-31 KRT31-R



For: **SINGER** (胜家) 21W180, 46W61, 47W62, 63
52W30, 31, 131W
CONSEW (康秀) 228, 228-11, 228R-1, 11
229, 229R, 229R-1, 238, 238-1
282, 282R-1, 289R-1, 358R-1
GOLDEN WHEEL (金轮) CS-8BH, 3610
MILLION SPECIAL (万特) MS-810, -820

YZH-810B HSH-31(B) KRT31-11S



For: **SEIKO** (精工) CW-1, 7, 7B, 8, 8B, 8V, 8BV
SINGER (胜家) 47W70, 131W
CONSEW (康秀) 207, 223, 223R-1,
227, 382, 382R, 388, 388R-1, 389, 389R-1
(full gib)
TYPICAL WANPING (莞坪标准)
TW3-8B

YZH-PF490 HPF-490 KRT470-S



For: **PAFF** (百福) 471-493
SEIKO (精工) PWB-22GW-8W

大型旋梭系列
LAGER HOOK SEIRVES

YZH2-B1H(6-5) **HSM-B1H** **KHS20-GTB**

7.94mm



For: **BROTHER** (兄弟) DB2-B745-5,-B746-5,-8
JUKI (重机) DDL-201H
WANPING (莞坪) B727, GC0302

YZH2-A1(6-7) **HSM-A1** **KHS20-RTB**

7.94mm



For: **BROTHER** (兄弟) DB2-B745-7, B797, B797-5
TAJIMA (田岛) TMB-E, TMB-W, TMW
JUKI (重机) DDL-201S
(heavy materials) (厚料)
WANPING (莞坪) GC6-5, GC6-6, GC6-7

YZH2-GC(6-10) **HSM-A1HTR** **KHS20-R1**

7.94mm



For: **TYPICAL** (标准) GC6-9, GC6-10
(extra heavy materials, thick lines)
HIGHLEAD (海菱) GC0388-D, GC128-B-D3
SIRUBA (高林) L819-X2-U, YF616-X2-U,
YF619-X2-U

YZH2-GC(2603)

7.94mm



For: **TYPICAL** (标准) GC2603 GC2605

YZH2-B(Q)TR **HSM-B(Q)TR** **KHS20-SPNP**

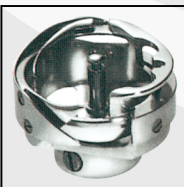
7.94mm



For: **SINGER** (胜家) 121D330AA
121C330AA, 369
(under trimming machine)
(自动剪线)

YZH2-ATR(1Q) **HSM-ATR(1Q)**

7.94mm



For: **BROTHER** (兄弟) BAS-412, 416, 423

YZH2-A(5) **HSM-A(5)** **KHS20-RPEM2AO**

7.94mm



For: **SEIKO** (精工) STH-3BL, 6BL, 7BL, 8BL,
8BL-25, 8BLC-BT
CONSEW (康秀) 206RB, 306RB
TYPICAL WANPING (莞坪标准)
TW1-0602

垂直回转式旋梭 (DP型)

高速人字型缝旋梭系列
HIGH-SPEED LAMBDROID SUTURE HOOK SERIES

YZH-251 **DB1-Z(20)** **KRT251**

7.24mm



For: **ANKAI** (安凯): AK-82800, 82800-D
82800-F, 82800-G
82801-1, 82801-2
82801-1D, 82801-2D

YZH-NJ(761) **DP2-NJ** **KRP41-LH**

7.94mm



For: **JUKI** (重机) LBH-761, 762, 763
DALIAN (大连) G13
HUANAN(SOUTH CHINA) (华南) G16-1
SHANGGONG (上工) G15
SUNGOOD (双角) GF11001

YZH-HJ(771) **DP2-NJ771** **KRP771**

7.94mm



For: **JUKI** (重机) LBH-771-774, 781-784
TAKING (天王星) TK-888
DALIAN (大连) G18
JACK (杰克) JK781
PANDA (建联) JL-781

YZH-LB(814) **DP2-LB** **KRP41-B**

7.93mm



For: **BROTHER** (兄弟) LH4-B814

YZH-DP2(815) **DP2-815**

7.94mm



For: **BROTHER** (兄弟) LH4-B815
BAS-500

YZH-DP2(107) **DP2** **KRP41-S**

7.93mm



For: **SINGER** (胜家) 107G, 107W1, 107W5, 17
SUNSTAR (日星) DPK-2
DUKOPP CADLER (杜克普) 252, 253,
255, 264, 91, 98

YZH-DP2(457) **DP2-57(2)** **KRP457**

7.94mm



For: **SINGER** (胜家) 457G, 457A, 457U
BROTHER (兄弟) LZ2-B852, -B853, -B854
ZOJE (中捷) ZJ457A/B/D
JACK (杰克) JK457

YZH-DP2(LP457) **DP2-57(2LP)** **KRP457-W**

7.94mm



For: **SINGER** (胜家) 457G
(Long hook point)
YULUN (友伦) YLM-457A
TAKING (天王星) TK-457A, 457G, 457U
(Long hook point) (长梭钩头)

YZH-2280 **DP2-57(2)** **KRP457**

7.94mm



For: **JACK** (重机) L2-2280, 2285

水平回转式旋梭

轴套小型旋梭系列
THE SLEEVES SMALL HOOK SERIES

YZH-515(J) **HSH-21-40(J)** **KRT21-J**

8.01mm



For: **JUKI** (重机) LH-512, -512-3, 515
SHANGGONG (上工) GC15-5-4D,
GD9, GD8-1

YZH-515H(AJ) **HSH-21-40(AJ)** **KRT21-R**

8.01mm



For: **JUKI** (重机) LH-512H, 515H
(Heavy materials) (厚料)
(short gib)

短轴小型旋梭系列
SHORT AXIS SMALL HOOK SERIES

YZH-820 **HSH-31(6)** **KRT31-NR**

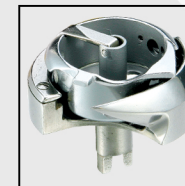
7.93mm



For: **GOLDEN WHEEL** (金轮) CS-810, 820
NITAKA (日高) TC-810S, 820S
SUNSTAR (日星) KM-867, KPW-827B
HIGHLEAD (海菱) GC24018, 24518, 24818
TYPICAL WANPING (莞坪标准)
GC24016, 24080 TW5-810

YZH-810 **HSH-31** **KRT31-R**

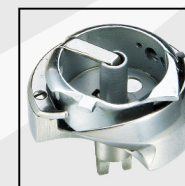
7.93mm



For: **SINGER** (胜家) 21W180, 46W61, 47W62, 63
52W30, 31, 131W
CONSEW (康秀) 228, 228-11, 228R-1, 11
229, 229R, 229R-1, 238, 238-1
282, 282R-1, 289R-1, 358R-1
GOLDEN WHEEL (金轮) CS-8BH, 3610
MILLION SPECIAL (万特) MS-810, -820

YZH-810B **HSH-31(B)** **KRT31-11S**

7.93mm



For: **SEIKO** (精工) CW-1, 7, 7B, 8, 8B, 8V, 8BV
SINGER (胜家) 47W70, 131W
CONSEW (康秀) 207, 223, 223R-1,
227, 382, 382R, 388, 388R-1, 389, 389R-1
(full gib)
TYPICAL WANPING (莞坪标准)
TW3-8B

YZH-PF490 **HPF-490** **KRT470-S**

7.92mm



For: **PAFF** (百福) 471-493
SEIKO (精工) PWB-22GW-8W